

## KOOI® REACHCONTROL

Meijer Handling Solutions will shortly be introducing its KOOI® ReachControl; a patented system that includes a small flowmeter (10x8x6 cm) and an app to operate the system. As the name suggests, this flowmeter can detect the amount of oil flowing through telescopic forks. The specially developed app, compatible with standard Android or iOS devices, can be used to receive and display data of the flowdivider. The more extensive version of the KOOI® ReachControl features the ability to stop the outer sleeves at certain customer adjustable lengths (at least 8 pre-sets).



## Improve safety and reduce pallet damages

### Features:

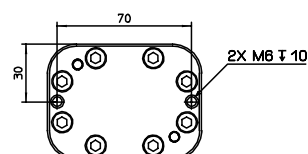
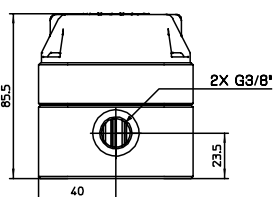
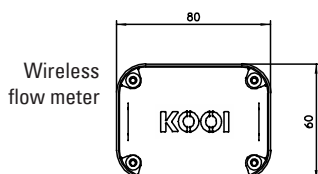
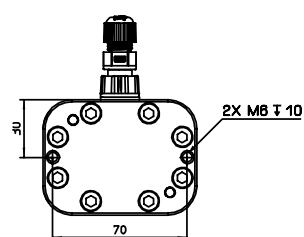
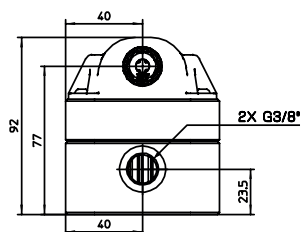
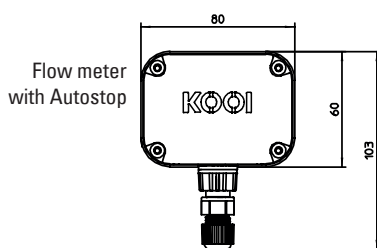
- No modifications on existing and new telescopic forks
- Ideally for after sales purposes
- Useable on all brands of hydraulic telescopic forks
- Programmable by mobile app (Android / iOS)
- Free choice in numbers of pre-sets and naming
- Automatically connection with Bluetooth® signal
- More systems can be used in same area.
- No wiring needed (without auto-stop).
- Including standard tilt indicators

### Optional:

- Auto-stop valve
  - Power supply 12-24 Volts
- 5" colour monitor
  - External power supply (12-24 Volts)
  - Sturdy casing and modern design
  - Can be operated with most commonly work gloves
- Forklift tablet, phone or display mount



## KOOI® REACHCONTROL

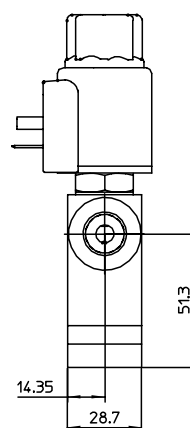
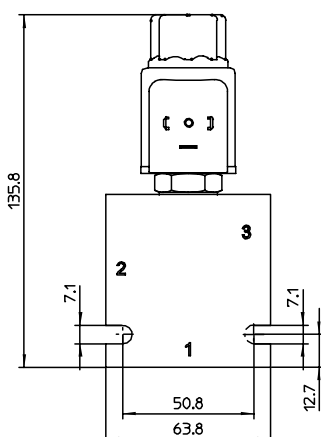
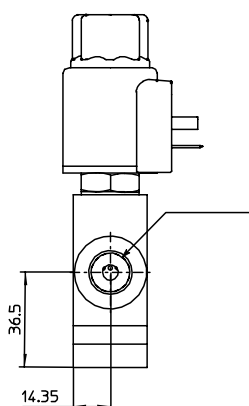


### Hydraulic data

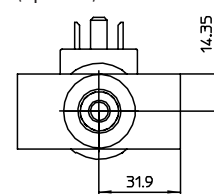
Operating pressure:	max. 250 bar / max. 3626 psi	
Nominal flow:	max. 20 L/min / max. 6.6 gal/min	
Filtration:	Class 21/19/16 according to ISO 4406 or cleaner	
Weight:	0.98 kg / 2.2 lb	
Media operating temperature range:	min 0 °C to max. +100 °C	
Ambient operating temperature range:	min. 0 °C to max. +60 °C	
Medium:	Hydraulic oil (ISO HH, ISO HL, ISO HM or ISO HV)	

### Electrical data

Power supply:	without Autostop	Battery, size A, 3.6V (3.60 Ah)
	with Autostop	Wired 12 or 24 VDC
Current drawn at 20 °C (Autostop):	2 A at 12 VDC 1.3 A at 24 VDC	
Data connection:	Low power Bluetooth®	



Autostop valve (optional)



## KOOI® REACHCONTROL

### Standard Controller

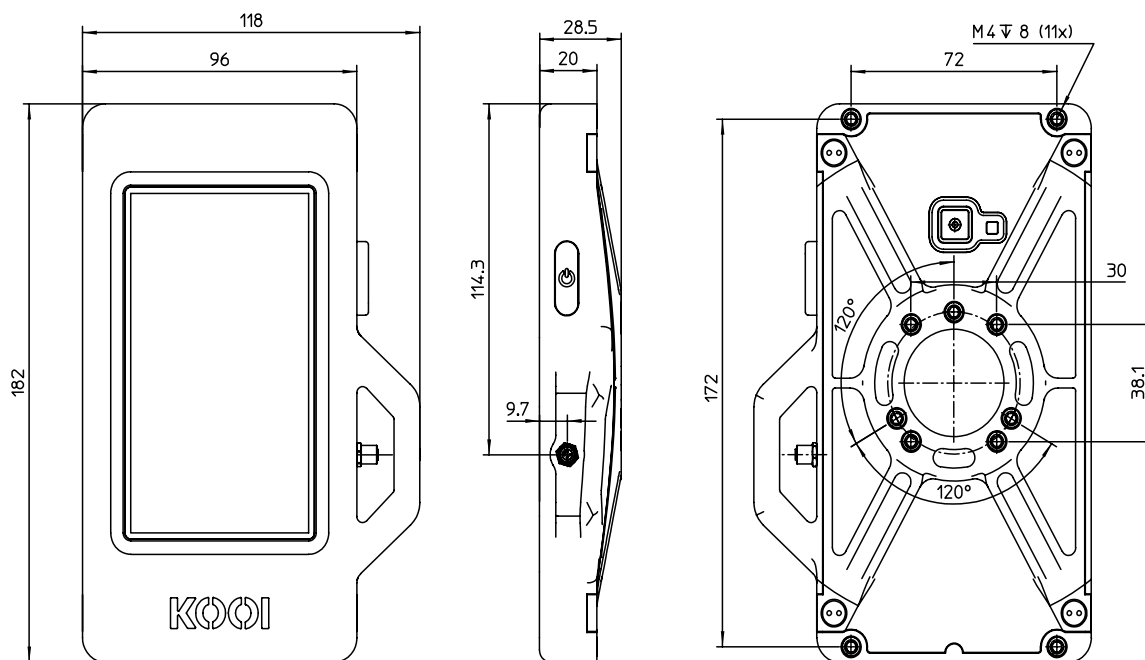


Bracket  
KO-RAM-M01

KOOI® ReachControl - Displays			
		Units	Standard controller
Dimensions	Article no.		10101481
	Height	mm	182
	Width	m	117
	Depth	m	28.5
	Display	inch	5
Attachment	AMPS 4 hole pattern (M4 thread) and 3-hole 120° (small) (M4 thread) and RAM® Round plate with ball C Size 1 1/2"		
Power supply	Ingress Protection		P54
	Robust housing		✓
	Voltage	VDC	12 or 24
	Current (at 20° C)	A	2A
	Intern power converter		✓
	Separate power converter		-
	Separate power cable		✓
	Attached power cable		-



Bracket  
KO-RAM-M02



Center hole pattern is compatible with AMPS 4 and RAM® Mounts 3-hole 120° (small) hole patterns.

## KOOI® REACHCONTROL

### Basic Controller

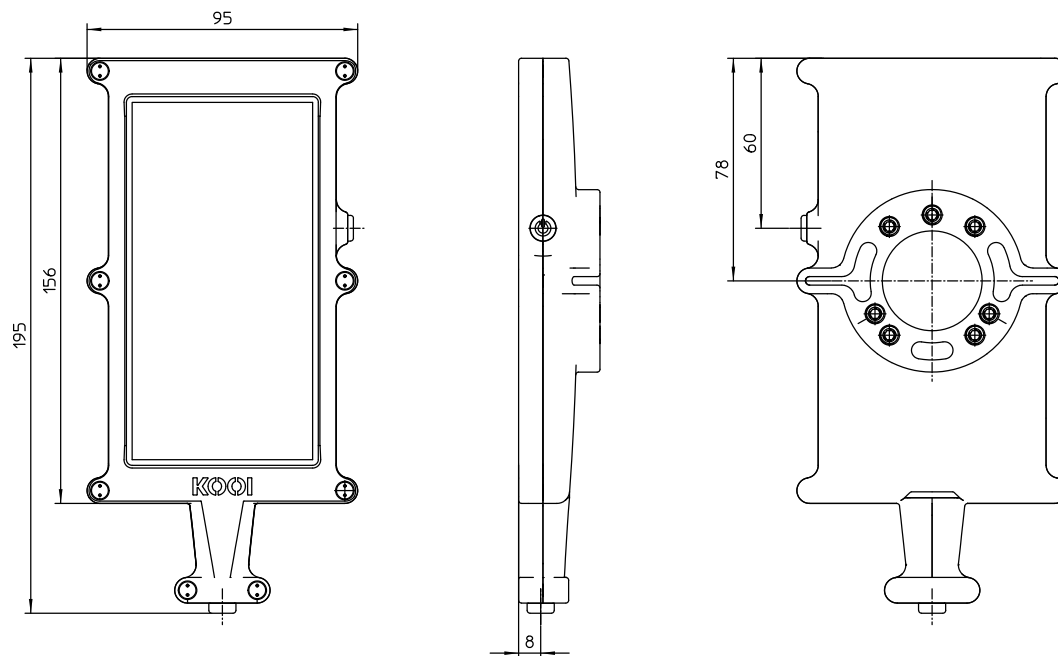


Bracket  
KO-RAM-M01

KOOI® ReachControl - Displays			
		Units	Basis controller
Dimensions	Article no.		10115868
	Height	mm	194.6
	Width	mm	94.9
	Depth	mm	29
	Display	inch	5
Attachment	AMPS 4 hole pattern (M4 thread) and 3-hole 120° (small) (M4 thread) and RAM® Round plate with ball C Size 1 1/2"		
Power supply	Ingress Protection		
	Robust housing		
	Voltage	VDC	5 (12-24 with external DC-DC converter)
	Current (at 20° C)	A	2A
	Intern power converter		-
	Separate power converter		✓
	Separate power cable		-
	Attached power cable		✓



Bracket  
KO-RAM-M02



Center hole pattern is compatible with AMPS 4 and RAM® Mounts 3-hole 120° (small) hole patterns.