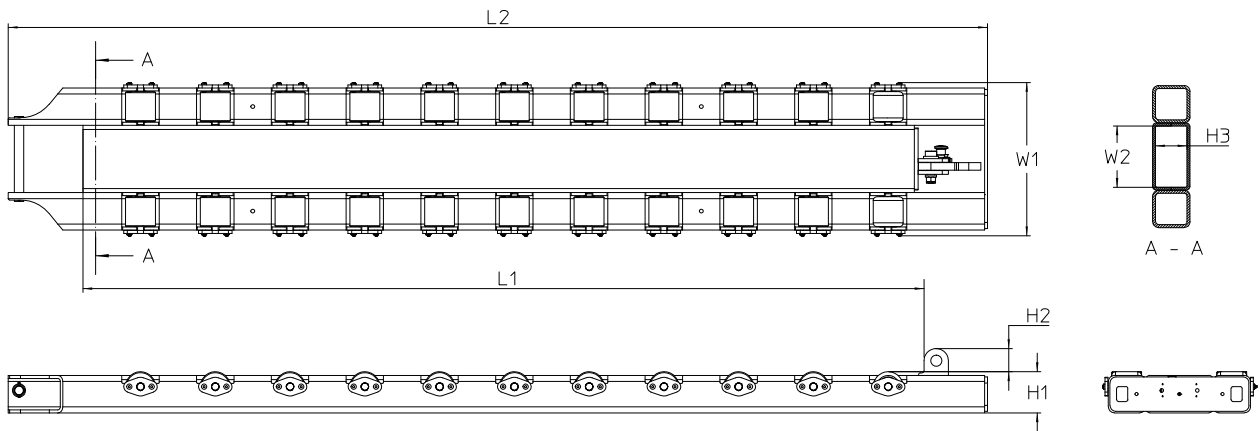


Rollerized Tine Extenders

0612201701



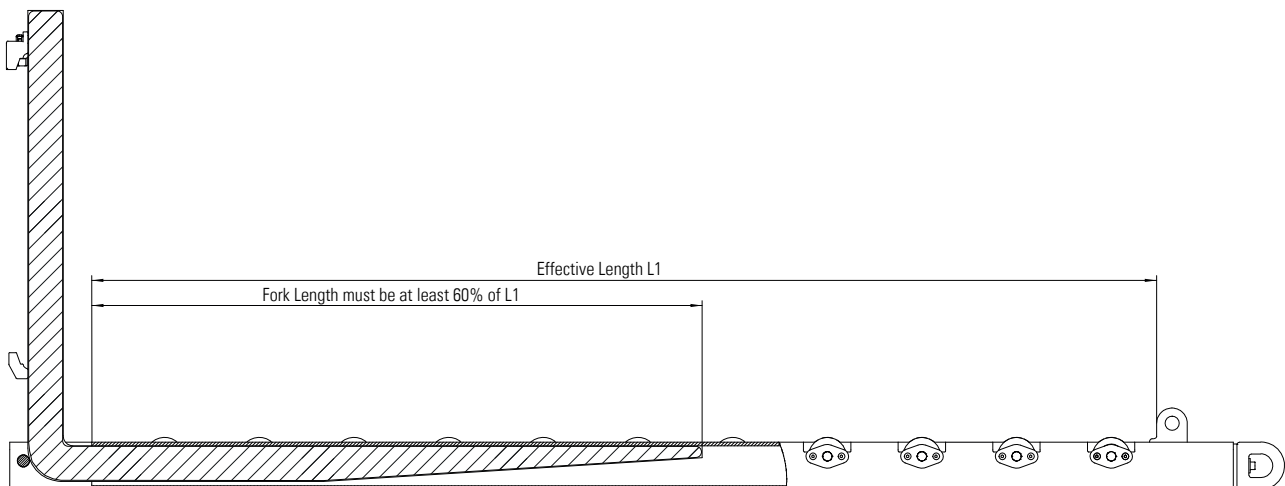
Model	Capacity	Blade width (mm) W1	Insert pocket (mm) W2xH3	Maximum fork section (mm)	Effective length (mm) L1	Total length (mm) L2	Total thickness (mm) H1	Palletstop height (mm) H2	Total weight per pair (kg)
RTE 50-1850	5000	410	165x85	150x75	1850	2220	110	65	371
RTE 50-2250					2250	2620			441
RTE 50-2450					2450	2820			474
RTE 50-2750					2750	3120			523

RTE 80-1850	8000	480	235x85	200x75	1850	2220	110	65	414
RTE 80-2250					2250	2620			483
RTE 80-2450					2450	2820			517
RTE 80-2750					2750	3120			577

Options

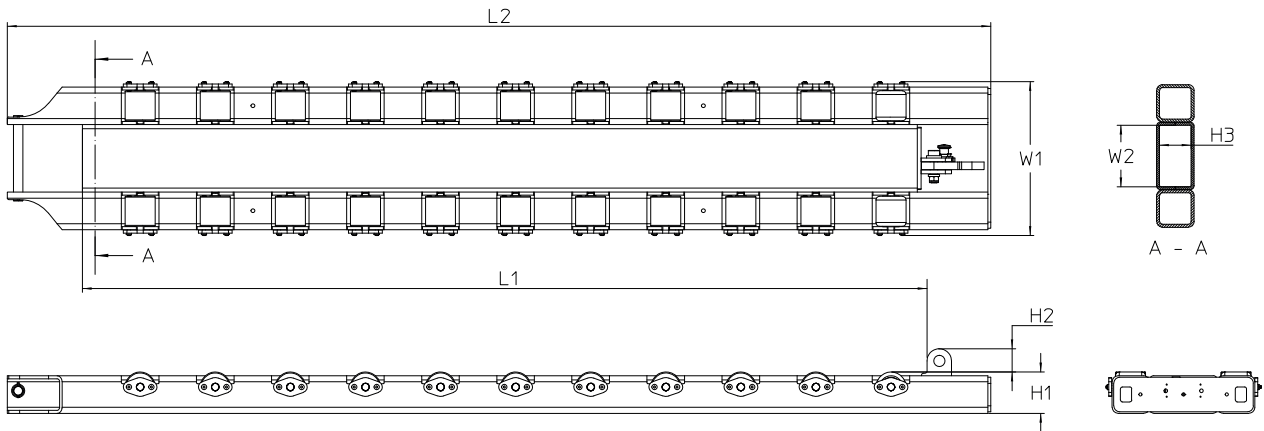
- Rubber bump stopper
- FOD fork locking system

Other capacities, insert pockets and effective length on request.



Rollerized Tine Extenders

0612201701



Model	Capacity on LC 24" (Lbs)	Blade width (in)	Insert pocket (in)	Maximum fork section (in)	Effective length (in)	Total length (in)	Total thickness (in)	Palletstop height (in)	Mass per pair (Lbs)
RTE 50-1850	11,000	16.1	6.7x3	5.9x3	72.8	87,4	4.3	2.6	817
RTE 50-2250					88.6	103,2			971
RTE 50-2450					96.5	111			1043
RTE 50-2750					108.2	122,8			1151
RTE 80-1850	17,600	18.9	9.3x3.3	7.9x3	72.8	81.8	4.3	2.6	911
RTE 80-2250					88.6	97.6			1063
RTE 80-2450					96.5	105.4			1138
RTE 80-2750					108.3	117.2			1270

Options

Rubber bump stopper

FOD fork locking system

Other capacities, insert pockets and effective length on request.

