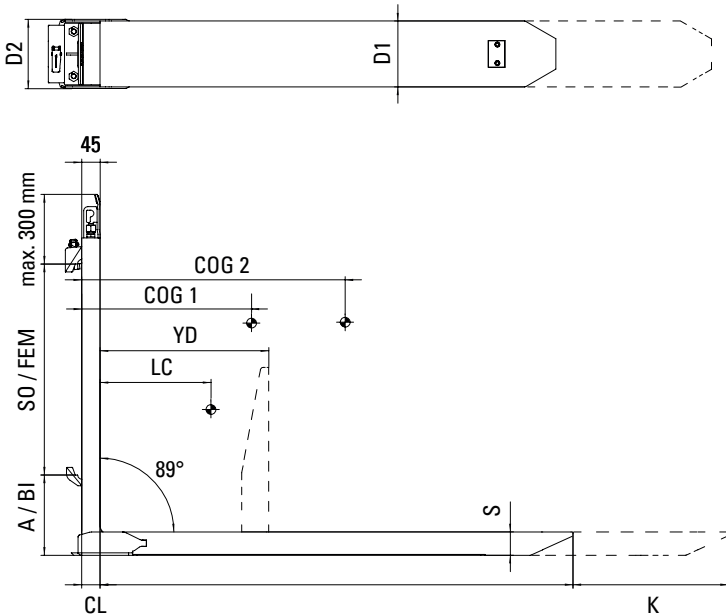


## ReachForks for Double-DeepPallet Stacking

# MAIN SPECIFICATIONS


**Recommended Models**

Model	Capacity on LC 600 (mm)	Section D1/D2xS (±mm)	L/K (±mm)	C (±mm)	CoG1h (±mm)	CoG2h (±mm)	CoGv (±mm)	Weight pair (kg)	ISO/FEM	Pallet Safety Space (±mm)	Palletstops YD-Y2 (±mm)
RG2 20 1200/0850	2000	131/139 x 57	1200/0850	45	408	624	99	163	FEM2A	1000+50+1000 1200+50+1200	200
RG2 20 1400/1050		131/139 x 57	1400/1050		496	767	91	182			
RGN2 30 1200/0850	3000	131/139 x 57	1200/0850	45	393	582	132	191	FEM2A	1000+50+1000 1200+50+1200	200
RGN2 30 1400/1050		131/139 x 57	1400/1050		478	717	121	212			
RGN2 35 1200/0850	3500	131/139 x 62	1200/0850	50	414	614	102	180	FEM2A	1000+50+1000 1200+50+1200	200
RGN2 35 1400/1050		131/139 x 62	1400/1050		502	754	94	201			
TGF2 1150/0900	3000	131/139 x 62	1150/0900	50	403	621	104	175	FEM2A	1000+50+1000 1200+50+1200	200
TGF2 1300/1050		131/139 x 62	1350/1100		491	763	96	195			

**Technical features:**

- Each of the two ReachForks has one cylinder, providing a high working speed with sufficient pulling and pushing force.
- Retracted length, stroke length and suspension can be customer specific. The most common ReachForks are listed below.
- A minimum working pressure of 160 bar and a maximum of 250 bar is required for the proper functioning of the ReachForks
- Too many hydraulic liters (flow) results in unnecessary heat and energy loss. Optimally, ReachForks function with a flow of 12-25 l/min.
- The outer sleeves are sized to be easily maneuvered into the pallet pockets.
- All ReachForks with model indication RG have an integrated equalizing valve, making a "flow divider" unnecessary.
- For optimal operation of the ReachForks, a passage of hydraulic components such as hoses and couplings require a minimum passage of 8 mm.
- The models marked RGN are slightly thicker (higher) than the RG models but have less deflection.
- RG models are mounted in series according to the hydraulic diagram.
- The ReachForks are guaranteed to be used in cold stores up to a maximum temperature of minus 30 degrees celsius.
- The capacity of each ReachFork is engraved in the fork back and on the nameplate. The capacity of the ReachForks is not the capacity of the forklift.
- The forklift supplier is responsible for the combination forklift and telescopic forks regarding residual capacity and proper assembly.