



ROLLERIZED TINE EXTENDERS

MANUAL ADD-ON ROLLER SLEEVES FOR HANDLING 463L MASTER PALLETS

- Suitable for the handling of aluminium air freight pallets.
- Simple to add on standard forklift forks.
- FOD, Palletstops, Rubber Bumper optional.
- No hydraulic or special requirements are needed.
- Designed to meet most air cargo freight pallets.

STREAMLINING AIR CARGO PALLET HANDLING WITH KOOI® ROLLERIZED TINE EXTENDERS

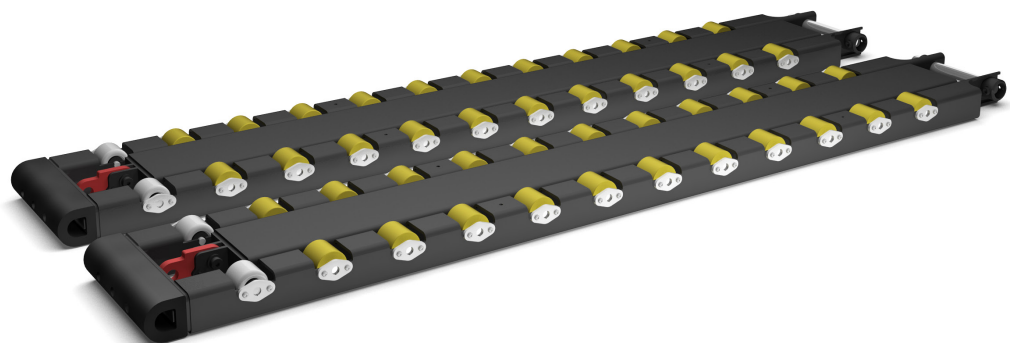
As the industry leader in extendable forklift fork solutions, KOOI® ReachForks, we also developed Rollerized Tine Extenders, which are engineered to optimize air freight pallet handling and reduce product damage during operations. In logistics, warehousing, or production environments, the Rollerized Tine Extenders enhance both efficiency and safety in aerial handling tasks, such as managing 463L master pallets

What are KOOI® Rollerized Tine Extenders?

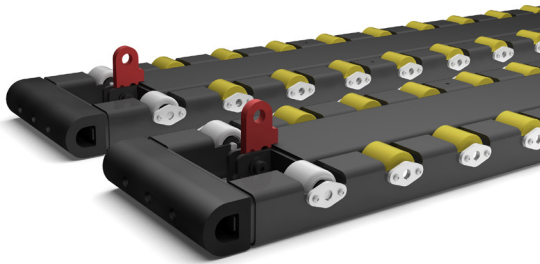
We developed a high-quality product years ago known for its exceptional reliability for handling aluminum air freight pallets. The Tines are crucial in supporting logistics across various sectors, including military, humanitarian applications, and even the F1. Equipped with industrial rollers featuring high-grade bearings and wear-resistant synthetic material, these cargo forks operate smoothly and quietly. The robust design, available with an optional FOD (Foreign Object Debris) feature, is quick to install and ensures long-lasting durability.

Key Benefits

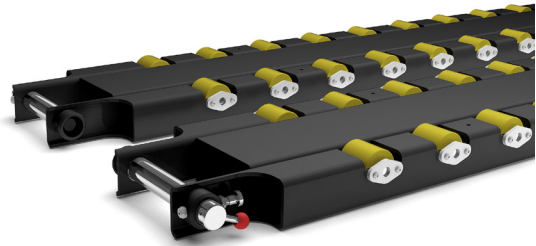
- High-strength steel construction
- Powder-coated protection.
- Industrial-grade synthetic guide rollers with bearings.
- Integrated foldable palletstops.
- Capacity of up to 10,000 kg.
- Available in various lengths and fork pockets.



The KOOI® Rollerized Tine Extender frame is produced entirely in-house, allowing us to maintain strict quality control. The profiles housing the rollers are highly durable, thanks to a specially engineered laser-cut construction. To prevent potential contact damage between the tines and other objects, the sleeves can be equipped with rubber bumpers. Additionally, the front row of rollers is made from steel, ensuring that any sharp edges on 463L pallets do not damage the special synthetic rollers. To keep the aluminum pallet securely in place during handling, pallet stops are also applied to prevent it from sliding off the rollers.



Rubber-Bumper & Palletstops



Foreign Object Debris locking-pin

Reducing Foreign Object Debris (FOD) with KOOI® Rollerized Tine Extenders in Air Cargo

In air cargo, Foreign Object Debris (FOD) refers to any unwanted objects, materials, or substances that pose a risk of damaging aircraft or cargo during loading, unloading, or ground handling. Common examples include loose bolts, stones, tools, trash, and other debris left on tarmacs, in cargo holds, or within aircraft operation zones. FOD can significantly impact safety and operations by creating hazards for equipment and personnel.

KOOI® Rollerized Tine Extenders are exceptionally effective at mitigating FOD risks in air cargo environments. Designed to enhance the loading and unloading process, these Tine Roller Forks provide secure and efficient handling, which in turn minimizes the chances of foreign objects disrupting operations. The precision and stability offered by KOOI® equipment help prevent the displacement of small items or debris during handling, reducing the risk of FOD-related incidents.





Why choose KOOI® Rollerized Tine Extenders?

Proven Reliability

The cargo on the Rollerized Tines is often highly valuable, and delays due to equipment malfunctions are simply not an option. Our first customer was NATO, and since then, we have supplied our Rollerized Tines to numerous military and humanitarian organizations like the United Nations. Additionally, our RTEs are used by air freight handlers and even in Formula 1, thanks to our quality.

KOOI® ROLLERIZED TINE EXTENDERS

Customizable Solutions

Tailored to fit your operation's specific needs, KOOI® Rollerized Tine are available in various models and sizes to handle different pallet dimensions, capacities, and fork inserts.

Safe Operations with RTEs

Always ensure that the combination of forklift and Rollerized Tine Extenders has sufficient capacity when carrying a load. Standard forklift forks must also always cover 60% of the insertion sleeves.

About Meijer Handling Solutions

Meijer Handling Solutions is the global leader in material handling attachments. We are committed to providing innovative solutions like KOOI® ROLLERIZED TINE EXTENDERS to help businesses improve their operational efficiency and reduce costs.

Production and safety standards

Meijer handling Solutions requires its KOOI® ROLLERIZED TINE EXTENDERS to be of the highest quality and we can only guarantee this by complying with all applicable international standards.



ISO 9001

Model for quality assurance in design/development, production, installation and servicing.



ISO 3834-2

Quality requirements for welding. Fusion welding of metallic materials.



ISO 14001

Environmental management standard for reducing environmental impact in operations.



ISO 2330

Manufacturing, testing, and marking requirements for solid-section fork arms, for quantity production and with all types of mounting.



CE

European Machinery Directives 2006/42/EC



Scan for more information

Meijer Handling Solutions B.V.

Oude Bildtdijk 894 | 9079 NG Sint Jacobiparochie | The Netherlands
+31 (0)518 49 29 29 | info@meijer-group.com | www.meijer-handling-solutions.com